

Notes from Parent Consultation Meeting re Montsaye Multi Academy Trust (MAT)

Monday 26th November 2012 6:00 p.m. RJS

Present

Morag Denton, Michelle Wright, Paula Knight, Andy Wiseman, Victoria Yarnold, James Yarnold, Esther Kettyles, Nicola Cutts, Michelle Budworth, Nick Garley, Christopher Sheldrick and Steve Hill.

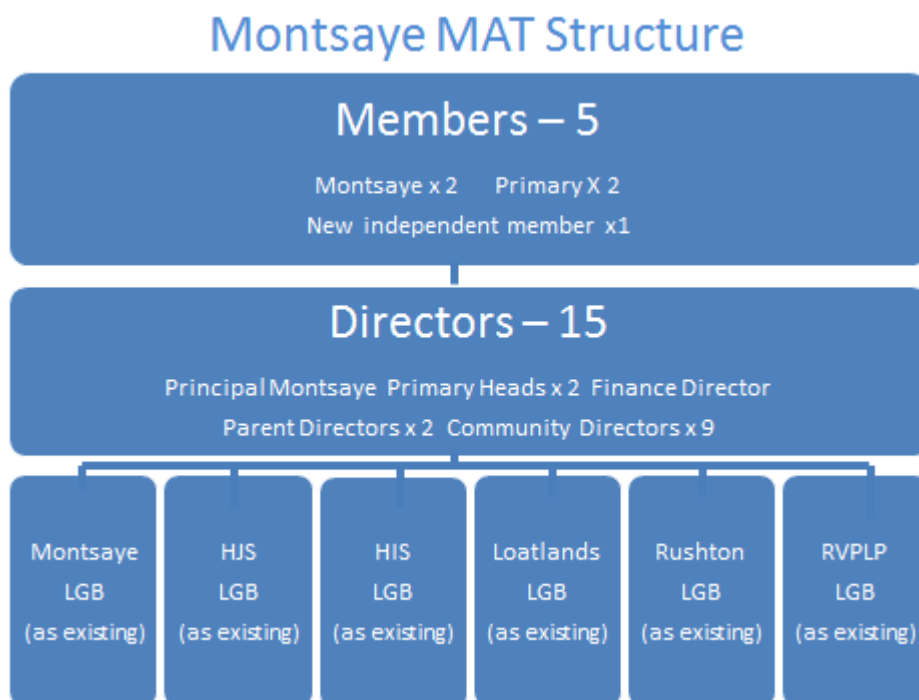
Apologies

Neil Freeman.

Lee Hurling (LH) thanked the parents for their attendance

LH introduced Christopher Sheldrick Parent Governor for the Children Centre and Steve Hill, Chair of Governors and thanked them for attending. Mr Sheldrick has experience of working for an Academy.

LH showed the following slide which gives the structure of the MAT.



LH explained that the Members have a strategic role within the MAT, and that they meet once or twice a year.

LH informed the meeting that at Director level it was very likely that the primaries would have greater representation as it has been agreed that at least 1 Community Director would be elected from each of the Governing Bodies (GB) and there would be

2 primary heads as Directors. The two primary Directors representatives would be agreed by the primary heads in the MAT. LH stated that if RVPLP were to join he would stand for one of these positions. However it was stressed that as with the Members, the Directors were there to represent and look after the needs of all stakeholders within the MAT and not their individual schools.

Schools will retain the own GB with the day to day running of the each school remaining in the hands of the GB. The only situation which might affect this would be if any of the schools within the MAT fell into a category of concern and then the other schools in the MAT would be responsible for helping to secure improvement.

The following questions were raised:

Q - How the schools would receive their funding arrangements?

A - Each schools full funding allocation would come into the MAT from the DfE and then be passed onto each school. LH explained that at present a % of the allocation from the DfE is retained by the LA.

Q - How will funding for statements be affected?

A- The arrangements for funding statements are changing regardless of any proposed move to be an Academy. From April 13 the school will no longer receive money directly to support statemented children. This money will be allocated from the overall school allocation. Having greater control of budgets as an Academy could be beneficial as the school will receive its full allocation of funds direct from the DfE without LA involvement in distribution of school budgets.

Q- Will the deployment of staff be affected by being a member of the MAT?

A - Schools would retain their existing staff. The MAT could and should provide opportunities to share staff expertise across the schools involved as a way of raising attainment.

Q - Who would employ the staff?

A- The staff would transfer under TUPE from having NCC as their employer to the MAT.

Q- Would there be any changes to the school day or to the school terms?

A - There are no plans to make any changes to the way the schools currently operate.

Q - Why are we seeking to join the Montsaye MAT when other academies such as Brooke Weston or Bishop Stopford have better results in terms of the % of pupils achieving 5 A - C grades?

A - Montsaye is currently graded as outstanding and this is a reflection of progress made by the pupils so whilst their overall % of 5 A - Cs may be lower, when the prior attainment of their intake is taken into account they are doing as well as other outstanding schools. It was also noted that approximately 90% of our children currently move onto Montsaye.

Q - A point was raised in relation to the Members in that if we were to join the MAT, RVPLP would be the largest primary member and therefore should have a Member representing RVPLP.

A- LH stated that the Members would be there to represent all stakeholders in the MAT.

Q- Who would be responsible for the upkeep of the buildings?

A - The school's GB would be responsible for this. There may be opportunities to share capital money across the MAT and also bid for money relating to the academies building programme.

Q - Would the school be responsible for its own Admission Policy?

A- As an Academy the school could set its own Admission Policy. This would most likely be discussed with the other schools in the MAT. Currently the school follows the LA Admissions Policy.

Q - Would parents still be free to choose which secondary school their children went to?

A- Parents would still be free to send their child to the secondary school of their choice.

Q - Will the children Centre be included in the proposed MAT?

A- It is very much the intention for this to happen. The Infant School currently oversees the running of the Children Centre through an agreement with the LA. However the LA are seeking to transfer their responsibility for all the Children Centres to move towards a commissioned service which would mean groups bidding to run the Centres. We have been told that the commissioning process should be completed by September 2013. It is not clear at the moment whether the MAT would be allowed to, or be able to, be part of this process.

There was general discussion about the values and the ethos of the school. Mr Garley stated that in his opinion the vision for the RVPLP that we have now has never been stronger and this will be a key driver in any involvement with the MAT.

LH shared his view that working together with other local partner schools was the way forward to secure school improvement. Due to funding cuts the LA is no longer able to offer this support. The RVPLP has shown that sharing expertise and good practice is the way forward to improve the outcomes for our learners. There would be financial savings to be made from the joint purchasing of services by schools within the MAT.

There was discussion around transfer from Yr 6 - Yr 7 and it was felt that this could be improved by being part of the MAT.

There was also general discussion about the possibility of changing the name from the Montsaye MAT as this implied that Montsaye were the main partners in the MAT when in fact each school is valued equally.

LH thanked everyone for their attendance.

Meeting closed at 7:40 p.m.